



Headlines

Autumn Term 1, Week 8

www.melthamceschool.co.uk

Date: Friday 25th October 2024

office.meltham@kirkleeseducation.uk

It's been a busy week and a very purposeful end to the half-term. Our Reception children have enjoyed their Welly Day creating some lovely outdoor art (*I have a beautiful image of a large rainbow created with the myriad colours of autumn up on my office wall which Mrs. Osborne presented me with this week*); Year 6 have completed their Year group assembly which I enjoyed on Thursday and which Mrs. Turner enjoyed this morning. This afternoon we will celebrate our Shining Stars and then we will enjoy our half-term, I hope you are able to enjoy yours, and I look forward to seeing you all in a week or so's time.

Thanks, Phil

Eco News

Cut Your Carbon November

Some members of the Eco Committee announced our Cut Your Carbon November Challenge in assembly on Wednesday. We are challenging everyone to take part in 6 small tasks throughout November, at home, to reduce our carbon footprint. Everyone will be bringing home a checklist this week. Complete as many of the 6 challenges throughout November and return to school by Monday 2nd December to be entered into our prize draw. Last year, we had an amazing response from this challenge, helping schools throughout the UK to reduce their carbon through November. Share your amazing carbon cutting efforts with your Eco Committee or Miss Ingham.

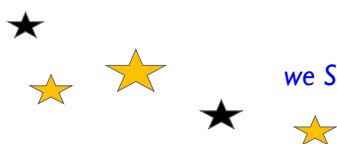
Clothes Swap 27-28 November

This year the Eco Committee has chosen Waste as one of their topics. We are tackling clothing waste by holding 2 Children's Clothes Swaps this year with Julia from Woven and Uniform Exchange. The first one will be held Thursday 27th November and Friday 28th November, 3:15-4pm in the hall. This is an exchange event, we ask that you bring up to 10 good quality clothing items, on the day, to exchange for tokens to purchase quality 'new to you' clothes. We will be accepting children's clothing items aged 4-14 years. We cannot accept shoes, swimming items, underwear or accessories. If you are having a clear out this half term, don't forget to save some items to exchange and visit us on the 27th and 28th. November is Buy Nothing New month and the perfect way to join in with our Cut Your Carbon challenge.

Thank you, Miss Ingham and the Eco Council

Well done to our Shining Stars!

The first group of children who have been chosen for the Shining Stars award this year are:



*From little sparkles to shining stars,
we Stand Out, Break Out and Shout Out, Growing the confidence to make a difference.*

ATTENDANCE

Our whole school target is:

96%

This week our whole school attendance was:

90.1%

Our attendance winners for the week are:

Classes 7&13

- Reggie and Oscar in EYFS
- Lena and Millie in Year 1
- Ivy and George in Year 2
- Arthur and Evie in Year 3
- Layla and Olivia in Year 4
- Florence and Freddie in Year 5
- Iris and Myles in Year 6

Kirklees Cross Country Final

Congratulations to Gracie P (Year 5), Reenie M (Year 3) and the Year 3 boys team (Hayden, George W, Jenson, Arthur and Jacob M) for reaching the West Yorkshire cross country finals to be held on 19th November. The children did an outstanding job finishing within the qualifying time at Leeds Road last Tuesday. All the children who took part did an outstanding job representing the school with their efforts and behavior.

Boys Football

Our Year 6 boys team visited St. Patrick's for a game with Mr. Baseford after school this Thursday and represented our school with great effort, sportsmanship and dedication. Unfortunately results didn't go our way, but the boys were a credit to both school and home. Well done.

Parents Evening

Appointment booking for Parents Evening will be with you today. My apologies it hasn't been available earlier, but we have had a few hiccups preparing it. I look forward to seeing you all on Parents Evening next half-term.

Last reminder School Application Deadline Approaching

Please remember that the Kirklees deadline for Secondary School applications is 31st October 2024. Access the Kirklees website via the link below for further information or to apply online:

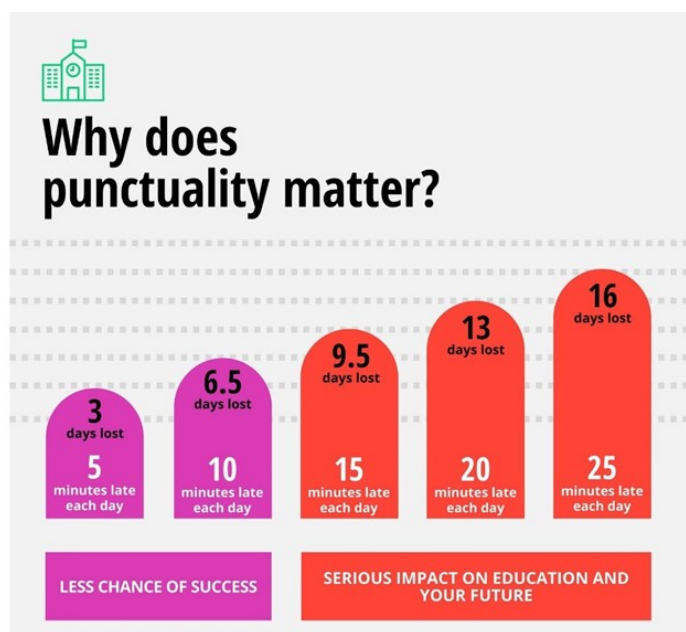
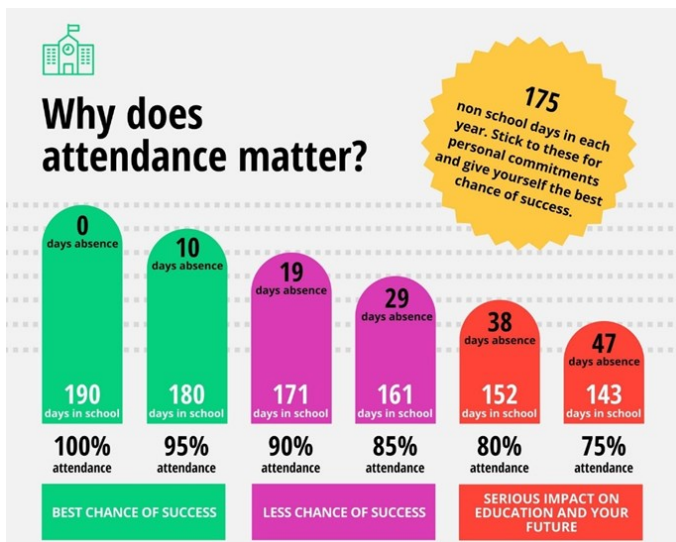
<https://www.kirklees.gov.uk/beta/admissions/apply-secondary-school-place.aspx>

Community News



Attendance Matters

The following charts are from our attendance policy.



Harvest

Thank you for your harvest offerings. The school council will be delivering it all to the Meltham Food Bank straight after half term.



Dates For Your Diary

Further dates and events for the Autumn Term will be added in September.

Mon 4th Nov - School reopens

Fri 8th Nov - Year 5 assembly to parents (9:15am)

Thurs 14th Nov - Year 4 assembly to parents (2:30pm)

Mon 18th Nov - Parents Consultation Evening

Wed 20th Nov - Parents Consultation Evening

Thurs 29th Nov - Sing-Up assembly in School at 2:15pm

Fri 29th Nov - School closed for teacher training

Fri 6th Dec - School Christmas Fair (Time TBC)

Fri 13th Dec - Christmas Jumper Day in school for Save the Children (£2 donation)

Thurs 19th Dec - Singing in the Playground (Time TBC) and Shining Stars Assembly (2:30pm)

Fri 20th Dec - School closes for Christmas

Mon 6th Jan - School opens for the Spring Term

Help with parenting links

<https://www.familylives.org.uk/how-we-can-help/online-parenting-courses>

<https://www.thrivingkirklees.org.uk/tkparents/>

Wellbeing Links

www.myhappymind.org

<https://smartphonefreechildhood.co.uk/>

I'm a parent/carer - Kirklees Keep in Mind (kirklees-keep-in-mind.nhs.uk)

<https://www.melthamceschool.co.uk/page/wellbeing/93763>

<https://www.nhs.uk>

<https://www.kirklees.gov.uk/beta/mental-health/index.aspx>

<https://www.thrivingkirklees.org.uk>

<https://www.triplep-parenting.uk.net/uk/hot-parenting-topics/my-child/parenting-during-covid-19>

<https://www.mind.org.uk>

<https://www.annafreud.org>

<https://youngminds.org.uk/supporting-parents-helpfinder>

<https://www.kirklees.gov.uk/beta/cost-of-living/index.aspx>

<https://www.thewelcomecentre.org/articles/cost-of-living-support-from-kirklees-council>

www.kirklees.gov.uk/cost-of-living



*From little sparkles to shining stars,
we Stand Out, Break Out and Shout Out, Growing the confidence to make a difference.*



Eco-Schools



Meltham C.E School

Our School Uniform.

At Meltham CE Primary we wear our uniform with pride. It gives us a sense of belonging to our school and creates an identity for our school in the community. We are very lucky because we are given a choice of 3 colours for our sweatshirts – red, blue and black. We can also wear shorts, trousers, a skirt or a dress – whatever we feel most comfortable in.

A uniform prevents children from having to worry about peer pressure and what clothing they should wear. When everyone wears the same clothes this acts as a social leveller with children wearing the same uniform no matter what their family background or income.

If you need support with school uniform or other items, please get in touch and we will do our very best to help.

Uniform

- A red, black or royal blue sweatshirt or cardigan, plain or embroidered with the school logo.
- A plain white polo shirt.
- Plain grey or black trousers, shorts or skirt.
- Shoes must be practical and should be plain and black.
- Socks or tights should be school colours.
- In the warmer weather children may choose to wear school-style summer dresses in either blue or red.

P.E Kit.

Children should come to school wearing their P.E kit on the day of their P.E lesson.

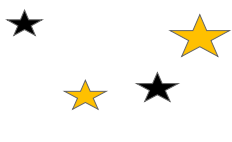
- A plain white t-shirt (no logo).
- Plain dark shorts and/or jogging bottoms.
- A plain dark hoody.
- Black Trainers/pumps.
- No sports kits, branded clothing or cropped tops

Forest School and Welly Days.

- Dark Plain clothing suitable for outdoor work depending on the weather that day.
- A change of footwear. Clean pair for indoor, wellies/old trainers for muddy outdoor work with a plastic/kit bag to take dirty footwear home in.

General information.

- Foundation stage/KS1 need a school book bag.
- KS2 children can bring a small rucksack style bag.
- Long hair must be tied back at all times and no jewellery other than watches and earrings for pierced ears are allowed.



*From little sparkles to shining stars,
we Stand Out, Break Out and Shout Out, Growing the confidence to make a difference.*



Eco-Schools

- If worn, 1 pair of earrings must be small, plain and flat which must be removed by the child before PE. Plastic retainers may be worn. In exceptional circumstance staff will provide children with tape to put over their studs. (all earrings must be removed before swimming in Year 4).
- If children have their ears pierced, we recommend it is done at the beginning of the summer holiday to allow them to heal.
- Children are not permitted to wear make-up or nail varnish
- No cropped tops to be worn in school (inc non-uniform days, forest school, clubs)
- **Please make sure all your child's belongings are clearly named/labelled.**

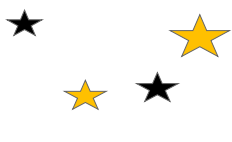
Suppliers.

- <http://www.termtimewear.com>
- <http://koolskools.co.uk/productcategory/meltham-cofe-primary-school>
- Free pre owned uniform available from <https://www.uniform-exchange.org/>
- Plain school uniform is also available from most supermarkets
- Labels for all clothing and belongings available from <https://www.stikins.co.uk/>

Daily Footwear



PE Kit, Forest School



*From little sparkles to shining stars,
we Stand Out, Break Out and Shout Out Growing the confidence to make a difference.*